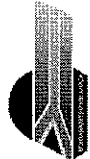
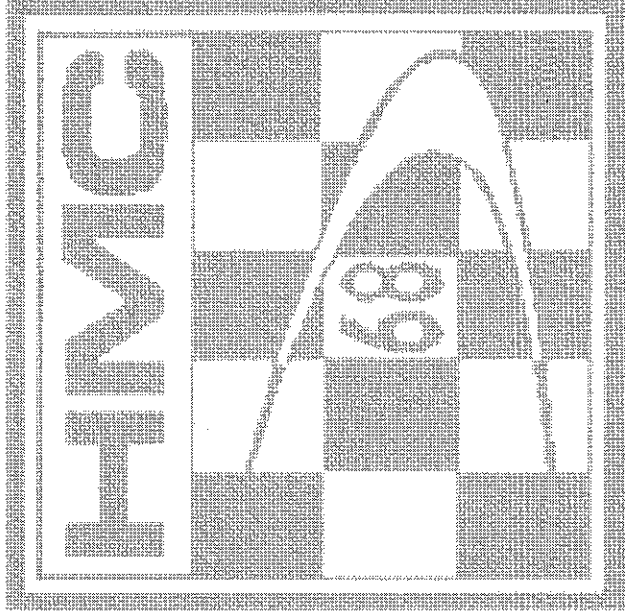



**HENCOM Autobody cc**

 **RALLY 2010**



**Spectator Guide**

 **THE IT COMPANY**

# WARNING

## MOTORSPORT IS DANGEROUS

In view of the high speeds attained by the competitors, accidents can happen. The promoters and organizers of this rally meeting cannot guarantee your safety. You are present at your own risk.

## MOTORSPORT IS GEVAARLIK

Weens die hoe snelhede wat deur deelnemers bereik word, kan ongelukke gebeur. Die promotors en organiseerders van hierdie byeenkoms kan derhalwe nie die veiligheid van toeskouers waarborg nie. U is teenwoordig op eie risiko.

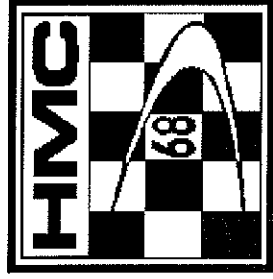
## UKHUPHISWANO IWE-MOTO LUYINGGOZI

Kanganghlobo lokuba abagatsi abaqhuba iimoto ngamendu aphakamileyo nengozi zingenzeka. Abaxhasi nabagqaguzeli bolu khuphiswano abanaso isiqinisekiso sokuphepha kuwo wonke umntu ongumbukeli wolu khupiswano. Ngokuba apha ubomi bakho busengozini.

PLEASE DO NOT LITTER !

ENJOY THE RALLY

*HMC Organizing Committee 2010*



# HIGHVELD MOTOR CLUB

THANK YOU TO OUR SPONSORS

*Main Sponsors:*

**Hencom Autobody cc  
THE IT COMPANY**

*Stage, Prize & Other Sponsors*  
LHJ Mechanical Seals & General  
Bolt & Nuts & Mining Supplies  
Impala Glass & Omheining  
Henlo Tune-up Centre  
Lukas Service Centre  
Classiq Panelbeaters  
Modern Auto Body  
Talisman Tool Hire  
High Speed Spares  
BCM Line Boring  
Exa Motor Group  
Ridge Pharmacy  
Midas

*Printing by*

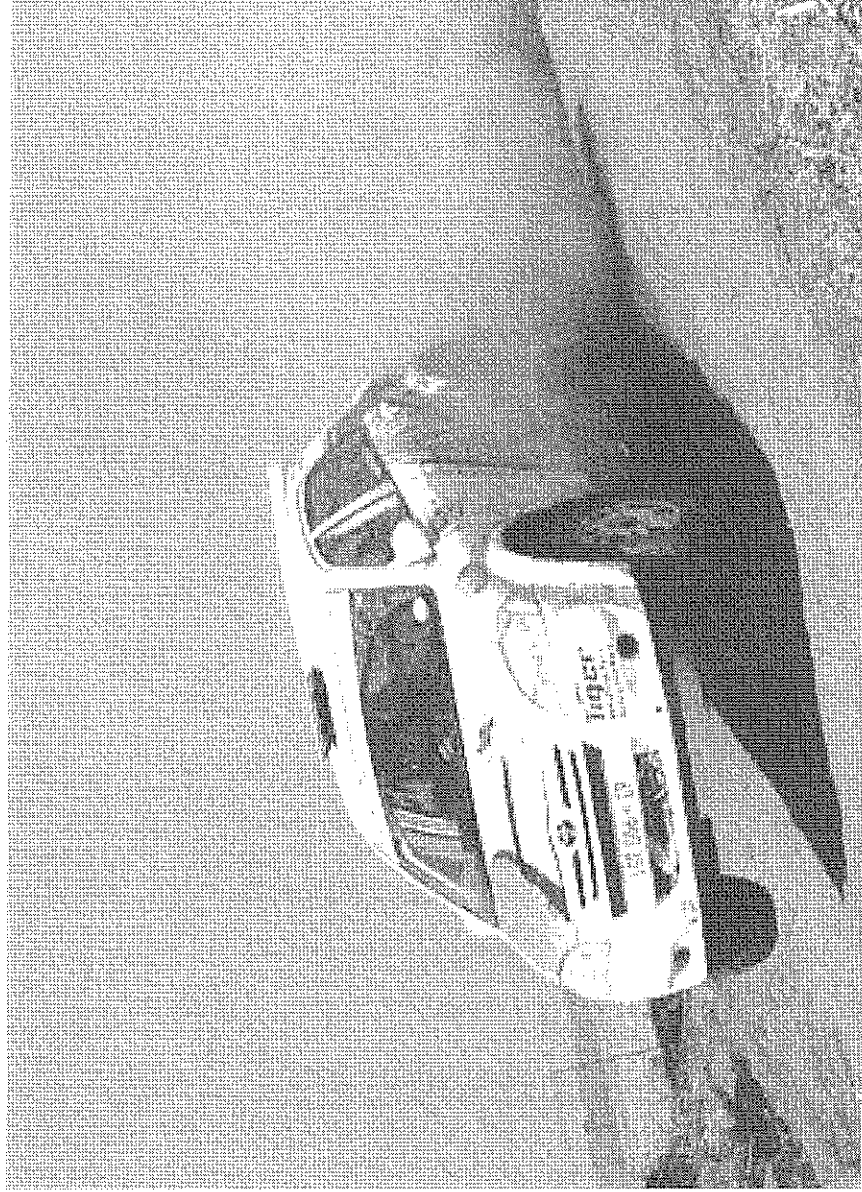
**Canon - Emalahleni**

Thank you

Highveld Motor Club Organizing Committee 2010



## TO SPECIAL STAGE 1 & 6



From Portuguese Club.

Turn right into Nita St.

Turn right into Mandela St.

0.00

0.10

Spectator Point next to tar road for the next 1km.

**DO NOT PARK IN THE TAR ROAD !!!!**

Please stop on grass. Clear of tar road.

Walk in away from tar road. Good Spectating!

Good Spectating!

Fast flowing sweeps and 90's.

## TO SPECIAL STAGE 2 & 4

From Portuguese Club.  
0.00 Turn right into Nita St.  
0.10 Stop. Turn right into Mandela St.  
1.29 Robot. Straight.  
1.54 Robot. Straight past Middelburg N4 off ramp.  
1.89 Robot. Turn right onto Pretoria N4.  
3.60 Freeway Split - Keep left to Emalahleni South proceed towards Johannesburg (N12).  
7.03 Ignore off ramp to Watermeyer / Bethal (R544).  
21.55 Take off ramp - Ogies/Emalahleni West (R555).  
22.38 Stop. Turn left towards Ogies (R555).

24.04 To Spectating Point 1  
0.00 Zero odo. Turn right at Oakhouse Lodge (Minnaar Wagon Maintenance - Big white board).  
0.04 Over bridge  
0.07 Straight on main road.  
2.05 Slow (road turn to right).  
Stop. On right - Good Spectating.  
Beware rally cars over bridge!!  
Please don't park in farm road or in gate openings!

Lots of sweeps & 90's.

To Spectating Point 2  
Return to tar road.  
0.00 Zero odo at tar road. Turn right towards Ogies (Minnaar Wagon Maintenance - Big white board).  
0.08 Straight on Ogies road (R555).  
Pass temporary railway crossing. Straight.  
4.00 Start on right next to tar road. Straight on.  
4.02 Spectating on right next to tar road.

Fast straights, big jumps and 90's for the next 900 meters.

## FROM SS 2 TO SS 3 & 5 SPECTATING

### \* Spectating Point 1

Return to tar road at Minnaar Wagon board. Go straight over towards Tweefontein. Zero odo.

### \* Spectating Point 2

Return to Minnaar Wagon board, pass temporary railway crossing. Turn right towards Tweefontein. Zero odo.

- 3.00 \* From there continue straight over railway crossing.  
5.90 Stop at shop. Straight on through bend.  
7.10 T-junction (Impazi Mine Pit\*ATC). Turn right.  
8.20 Turn left at "Naaupoort"  
16.80 Kleinkopje Mine on right. Straight on.  
Ignore Clewer turn off.  
21.00 4 Way stop (Witbank/Bethal). Turn right towards Bethal (Duvha Power Station).  
24.07 At 3 way stop turn left towards Duvha Power Station over dam bridge.  
28.50 Turn left at Golden Mile Estate board.

### Spectating Point A

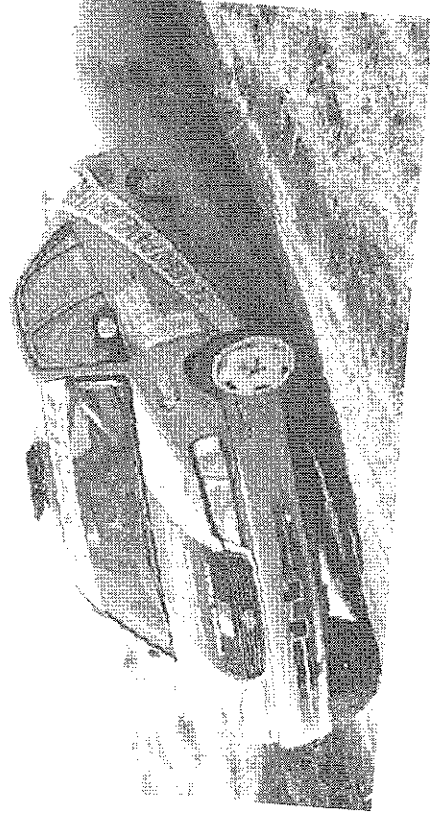
Continue on gravel road up to bend spectate on outside of fence.

### To point B (Bakkies only)

- 31.51 Straight on. Turn right onto small gravel road.  
32.00 Enter trees - road bad!  
32.40 Turn right. Go around heap. Follow road.  
33.00 Stop. Spectate.

## TO SPECIAL STAGE 3 & 5 FROM PORTUGUESE CLUB

- 0.00 Turn right into Nita St.  
0.10 Stop. Turn right into Mandela St.  
1.29 Robot. Straight.  
1.54 Robot. Straight past Middelburg N4 off ramp.  
1.89 Robot. Turn right onto Pretoria N4.  
3.60 Freeway Split - Keep left to Emalahleni South proceed towards Johannesburg (N12).  
6.80 Turn left at (R544) Watermeyer/Bethal turnoff.  
7.30 T-Junction turn right towards Bethal/Vandyksdrift.  
8.22 Robot. Straight (Tasbet Spar on left).  
9.93 4 Way stop. Straight (Duvha Park).  
12.35 4 Way stop. (Naawpoort/Tweefontein). Straight.  
To next instruction. Carefull heavy vehicles!  
15.42 3 Way stop. Turn left towards Duvha Power Station over dam bridge.  
19.59 At Golden Mile Estate turn left.  
21.94 Onto gravel road go straight up to bend. Spectate on bend outside of fence (Point A).  
22.10 To point B. Straight on. Turn right onto small gravel road. (Bakkies only!)  
22.60 Tree entry - road bad!  
23.07 Turn right. Go around heap - follow road.  
23.43 Stop. Spectate and enjoy!



## TO SPECIAL STAGE 4 SPECTATOR POINT

- 0.00 From this point return to tar road. Zero odo. Turn right.  
3 Way stop. Turn right towards Witbank Emalahleni.  
4 Way stop. Turn left towards Tweefontein.  
11.00 Kleinkopje Mine on right. Ignore Clewer. Straight on.  
20.00 T-Junction. Turn right towards Blackhill (R547).  
21.30 Turn left (White board on right) - Group Trans Centre.  
Follow road around bent.  
22.50 Stop street. Straight. Stop on right.  
25.40 Stop. Rail crossing. Straight on.  
28.40 Country Garden Guesthouse - Straight over SS4.  
(Spectator Point A).  
Over bridge alongside railway. Straight.  
29.60 To point A. Turn right up to herpin and fast straight.  
31.00 Turn right at board B/B.  
31.30 From this point spectate for next 600m.

Keep road and driveways clear for guests and farmer.  
Return to main tar road.

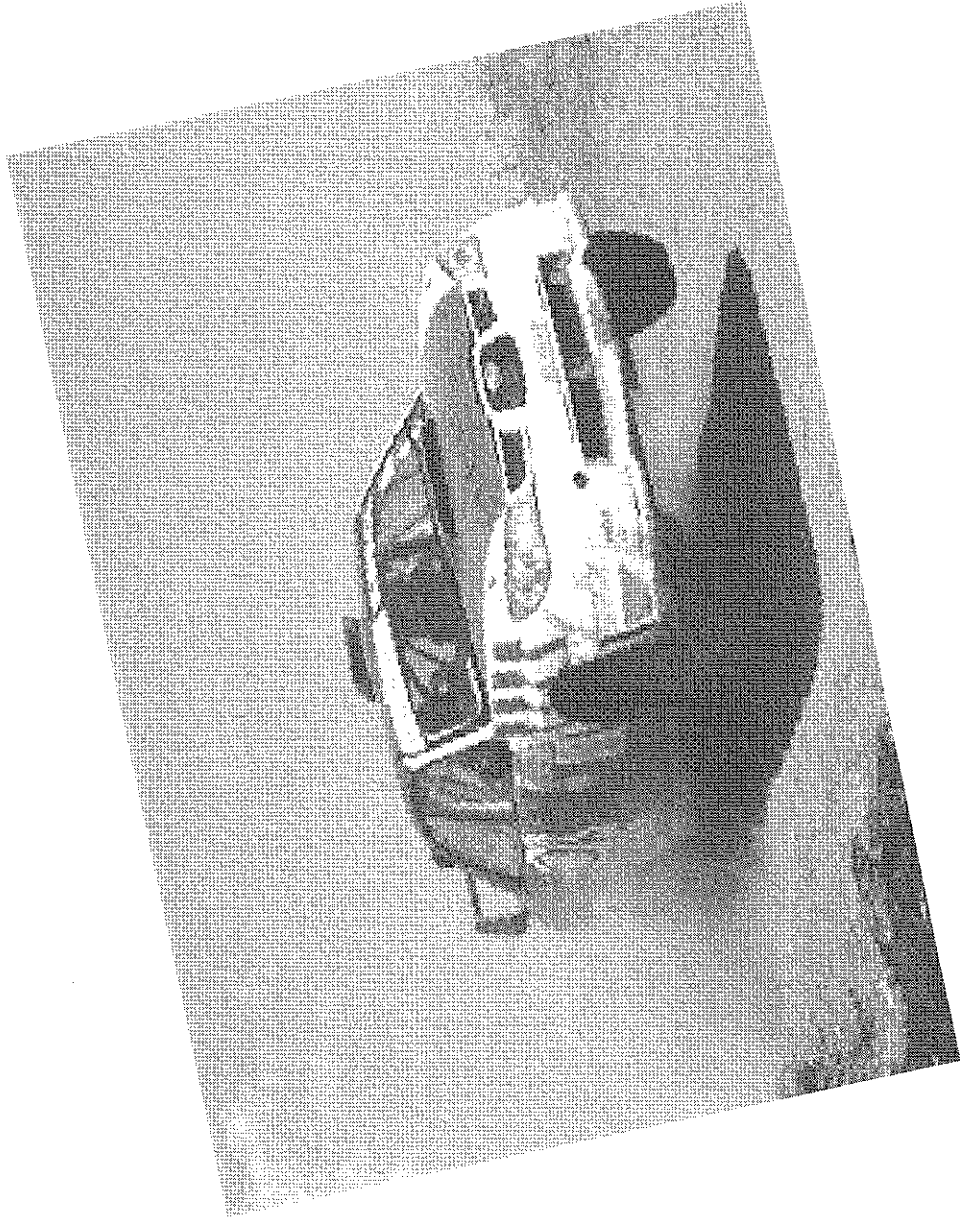
## FROM SS 3 & 5 BACK TO PORTUGUESE CLUB AND SS 6.

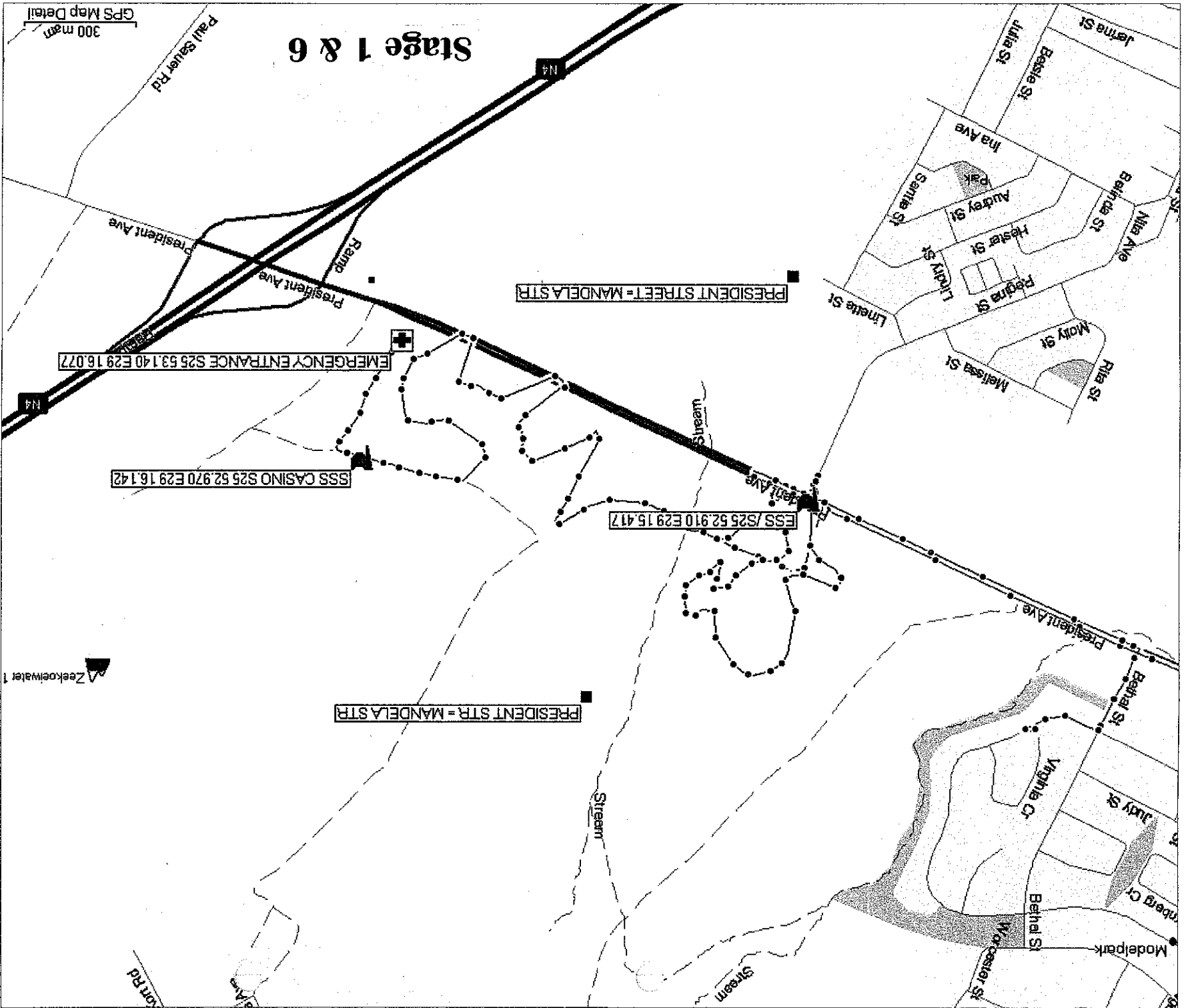
- 0.00 Return to main tar road. Zero odo. Turn right proceed straight over dam bridge.  
4.05 Stop. Turn right towards Witbank/Emalahleni.  
7.12 4 Way stop (Tweefontein/Naauwpoort). Straight on.  
10.90 4 Way stop. Straight (Duvha Park).  
15.03 Robot. Straight (Tasbet Spar on right).  
16.36 Robot. Turn right towards Nelspruit / Middelburg (N4) freeway.  
16.84 Join freeway.  
20.76 Take President St (Mandela) offramp at Casino.  
21.18 Robot. Turn left into Mandela St.  
21.42 Robot. Straight. (Spectating on right for SS 6).  
Proceed straight.  
21.80 Robot. Mall on left. Proceed straight.  
22.61 3 Way stop. Turn left into Nita St.  
22.70 Turn left into service area.

## **FROM SS 2 & 4 TO SERVICE AREA**

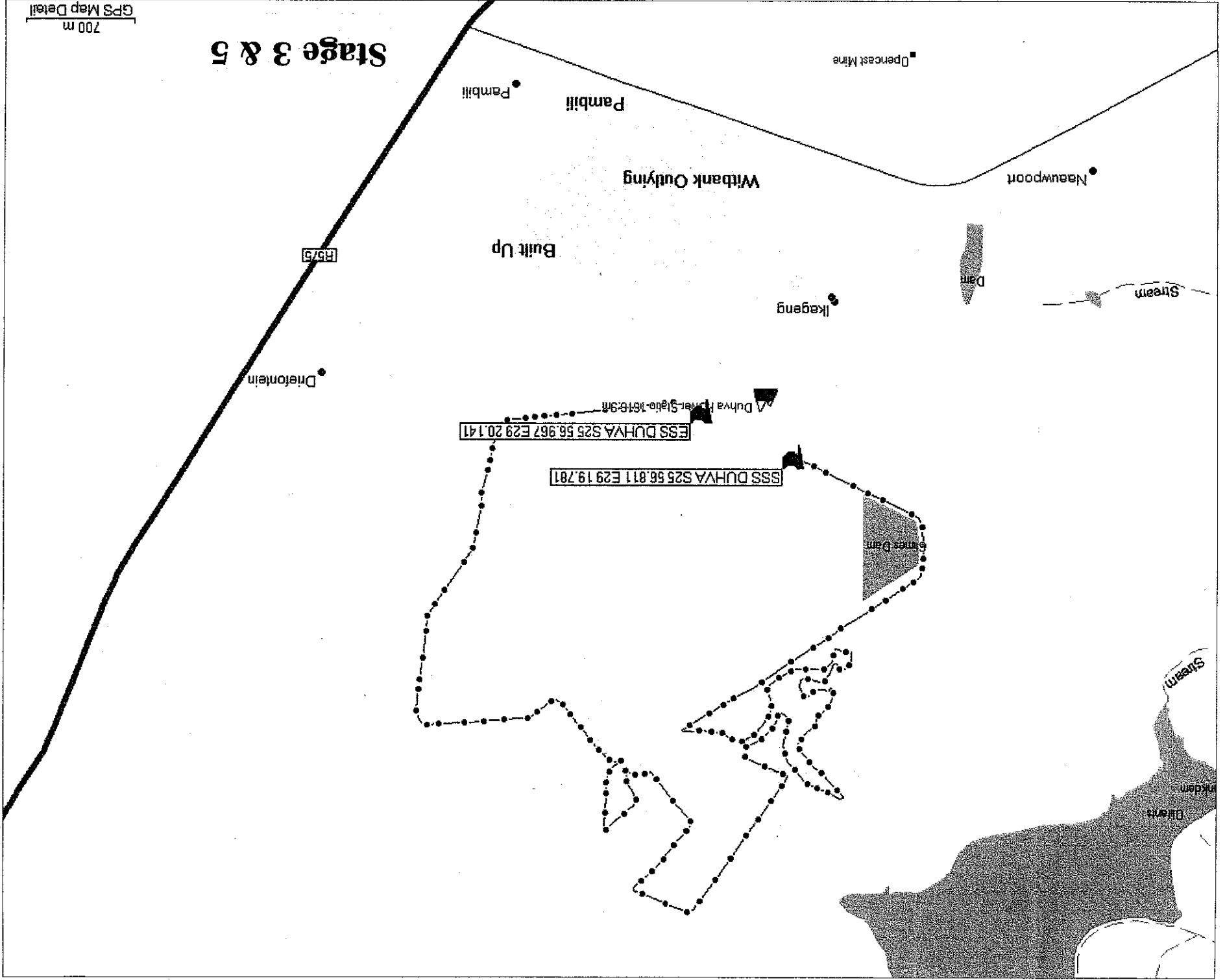
**At Minnaar Wagon Maintenance board continue straight to freeway. Zero odo.**

- 1.70 Turn right onto freeway direction Emahlaleni (N12).**
- 16.30 Ignore Watermeyer/Bethal off ramp (R544).**
- 20.90 Take off ramp President St. (Mandela).**
- 21.20 Robot left into Mandela St.**
- 21.40 Robot. Straight on (SS 6 spectating on right).**
- Robot. Mall on left. Proceed straight.**
- 21.80 3 Way stop. Turn left into Nita St.**
- 22.70 Left into service area.**









# Stage 3 & 5

700 m  
GPS Map Detail